



AHA / HRET HEN

Improvement Leader Fellowship – Wave 2
Affinity Group Roundtables and Report Out
August 13, 2012



American Hospital
Association®



HEALTH RESEARCH &
EDUCATIONAL TRUST
In Partnership with AHA

Agenda

- Welcome and introductions
- Objectives
- Icebreaker

**Affinity Group
Approach and
Collaboration
Opportunities**

**Affinity
Group
Roundtable
Discussions**

**Affinity
Group
Report
Out**

- Q&A and next steps



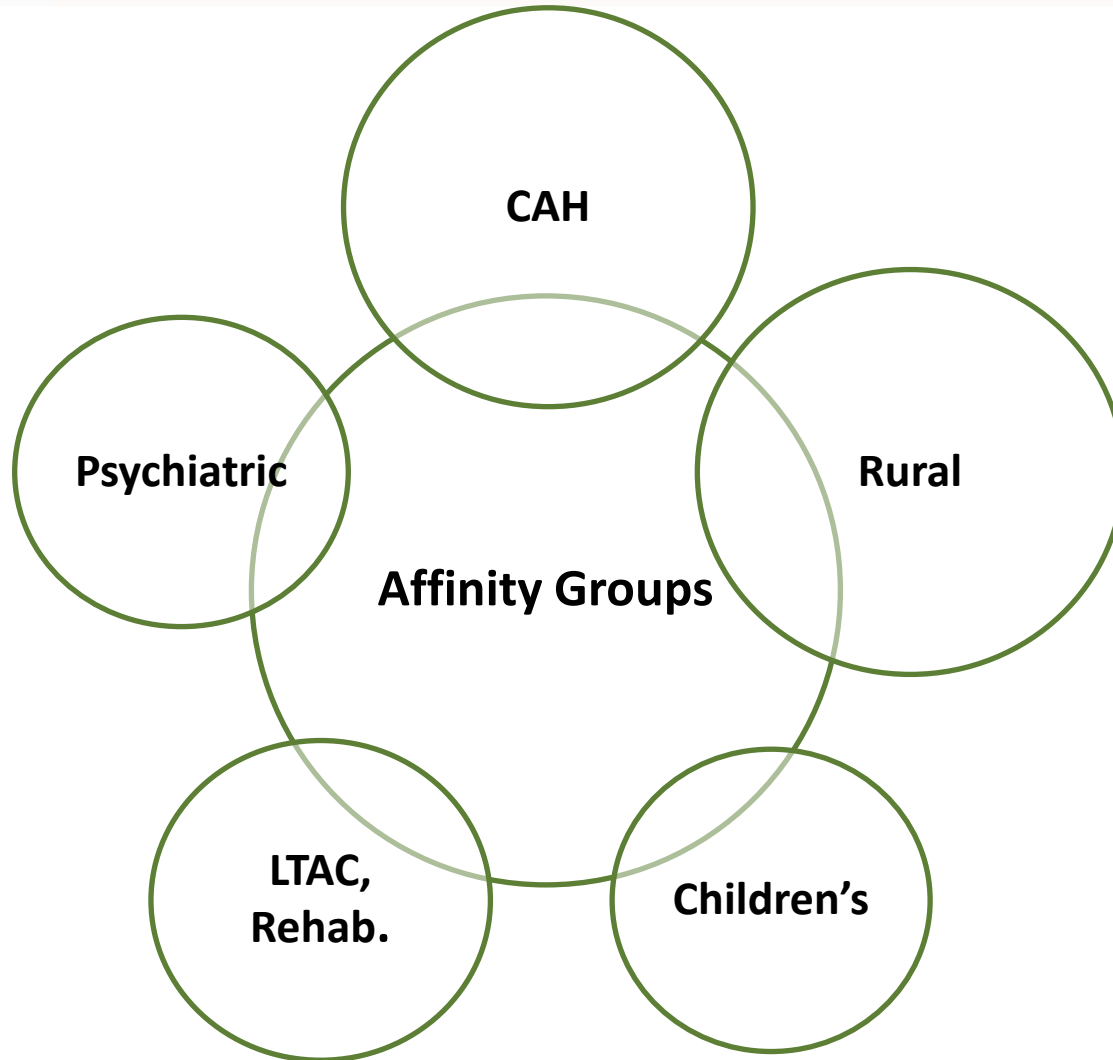
Welcome and Introductions

- Welcome, thank you for joining us
 - Cheryl Ruble, Improvement Advisor, Cynosure
 - Denise Remus, Improvement Advisor, Cynosure
 - Tasha Gill, Program Manager and Affinity Lead, HRET
- **You!**



Additional Introductions...

You





Objectives

- Discuss the benefits of participating in affinity group activities
- Provide an opportunity for you to discuss ideas for rapid improvement
- Provide an opportunity for you to discuss your unique challenges and barriers, lessons learned and best practices – within your affinity groups
- Provide an opportunity for you to discuss your unique challenges and barriers, lessons learned and best practices – within the larger group



Icebreaker

- What can we learn from this activity and how is it related to process improvement?



Discuss the...

**Affinity Group
Approach
and
Collaboration
Opportunities**



HRET HEN

Participant Characteristics

Total (as of 6/11/2012)

1617

Principal Service	# Participants
General Med / Surg	1399
Acute Long-Term Care	46
Rehabilitation	41
Psychiatric	37
Children's Gen Med / Surg	11
Other Specialty	5
Surgical	5
Orthopedic	4
OBGYN	4
Cancer	2
Children's Orthopedic	2
EENT	2
Heart	2
Children's Rehabilitation	1
Chronic Disease	1
Unassigned (1)	55

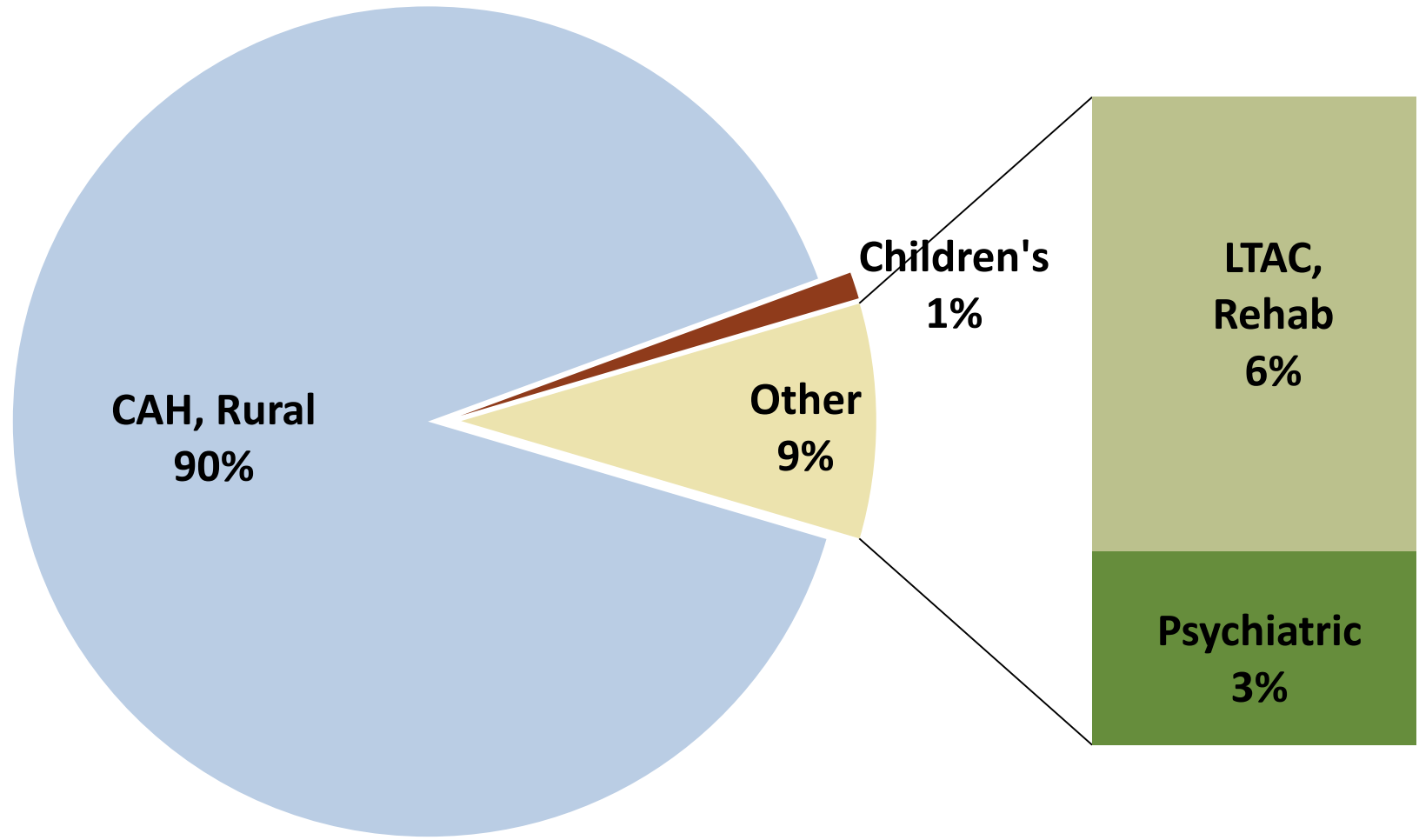
CAH / Size	# Participants
CAH	466
Not CAH, <= 100 beds	390
Not CAH, 101-299 beds	481
Not CAH, >= 300 beds	179
Unassigned (1)	101

Location	# Participants
Urban	864
Rural	753
In 100 Largest City	205
In a System with > 25 hospitals	325

(1) Unable to determine hospital characteristics from AHA survey data



Affinity Group Breakdown





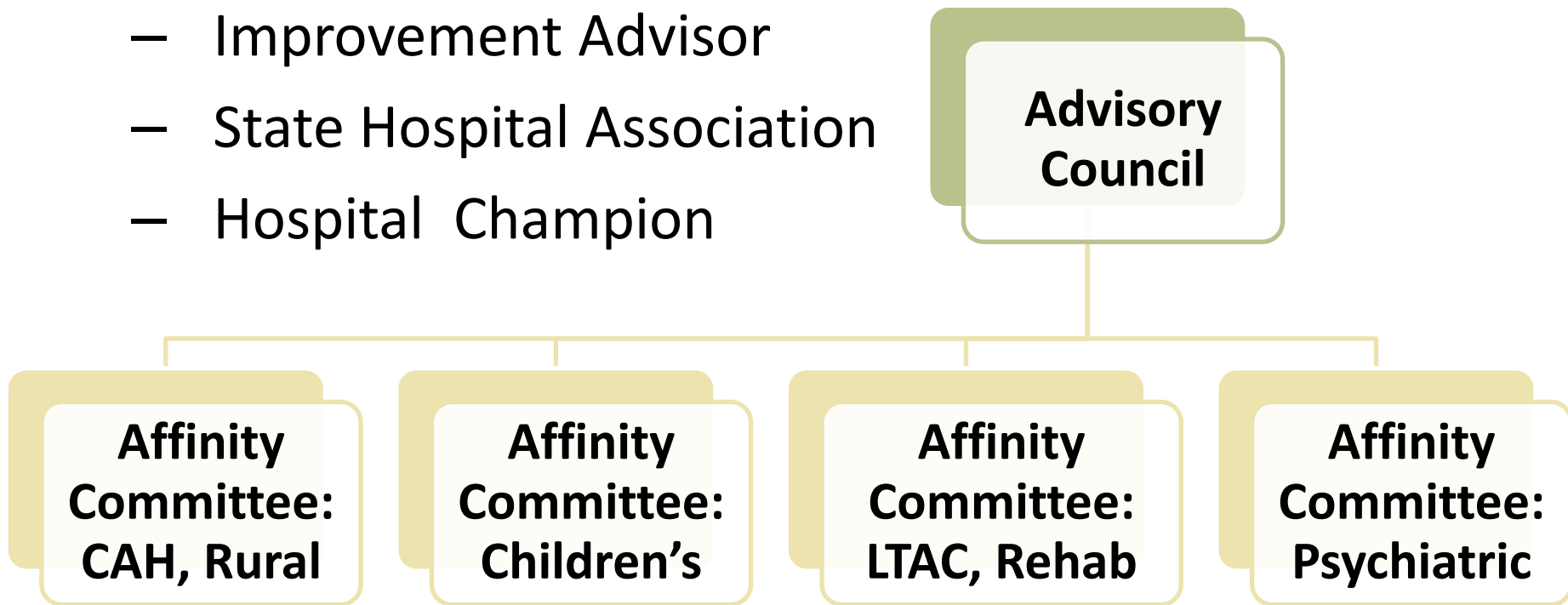
Affinity Group Approach – Structure

- Four Affinity Groups
 - CAH / Rural
 - Children's
 - LTAC / Rehab
 - Psychiatric



Affinity Group Approach – Roles

- Each Affinity Group will have support from
 - HRET
 - Improvement Advisor
 - State Hospital Association
 - Hospital Champion





Affinity Group Approach – Roles (cont.)

- Each Affinity Group will have support from:
 - **HRET**: National oversight, direction and operational support
 - **Improvement Advisor (IA)**: Clinical support and coaching
 - **State Hospital Association (SHA)**: Recruiting hospital Champions, participating in activities to help frame conversations and informing hospitals of upcoming activities
 - **Hospital Champion**: Leading activities to help frame conversations, presenting hospital stories and sharing resources and lessons learned



Affinity Group Approach – Collaboration Opportunities

- Improvement Leader Fellowship, Wave 2
 - IL (Aug. 13-14)
 - CO (Sept. 27-28)
 - FL (Oct. 3-4)
- **National Collaborative, Meeting 2**
 - IL (Aug. 15-17)
- **LISTSERVs®**
- **Coaching Webinars**



Affinity Group Approach – Collaboration Opportunities (cont.)

- LISTSERV:
 - All attendees will be added to the respective LISTSERV®
 - Those unable to attend the Fellowship should email HEN@aha.org and with the subject line “Please add me to the *Affinity Group* LISTSERV®”



Affinity Group Approach – Collaboration Opportunities (cont.)

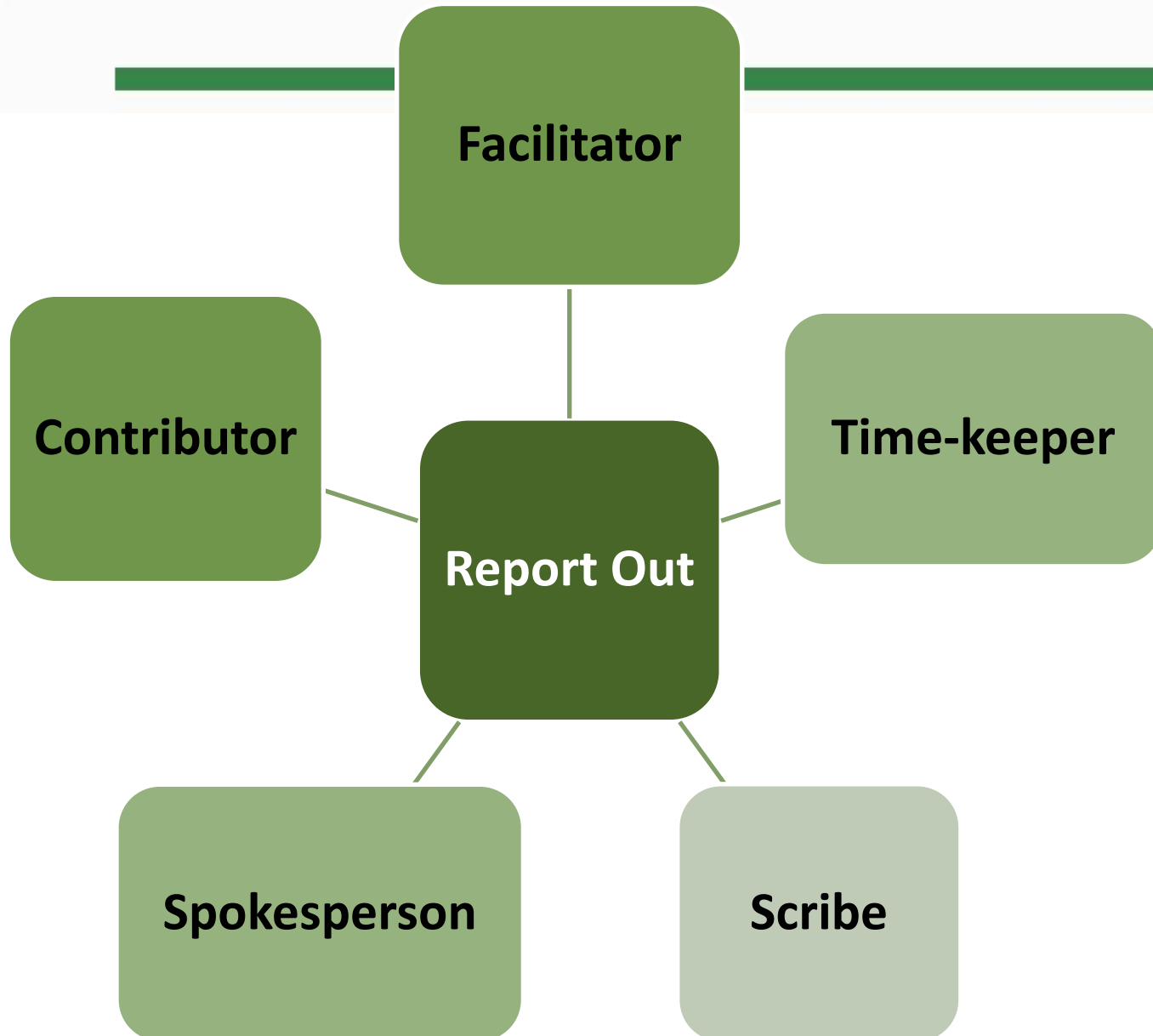
- Coaching Calls
 - Monthly Coaching Calls for the first two months
 - Tuesday, August 21 and Tuesday, September 18, 11:00 – 11:45 AM, CDT
 - Registration information will be posted on the HRET HEN website (www.hret-hen.org), and sent to LISTSERV®
 - Bi-monthly Coaching Calls after the first two months
 - Tuesday, November 20, 11:00 – 11:45 AM, CDT, etc.



Affinity Group Roundtable Discussions



Roundtable Discussion: Roles





Roundtable: Discussion

Please
Discuss
for the
Report
Out:

What are your unique challenges or barriers, because of your Affinity Group?

What are ways that you have overcome some of these challenges?

If you have not had an opportunity to overcome challenges, what are some possible solutions?

What can others learn from you?

What are other National resources that would be helpful for your Affinity Group cohort?



Affinity Group Report Out



Roundtable: Report Out

Please
Report
Out:

What are your unique challenges or barriers, because of your Affinity Group?

What are ways that you have overcome some of these challenges?

If you have not had an opportunity to overcome challenges, what are some possible solutions?

What can others learn from you?

What are other National resources that would be helpful for your Affinity Group cohort?



Q&A and Next Steps

- What questions or comments do you have about the Affinity Groups or today's activities?
- Who would like to volunteer to help lead a hospital story?

Thank you!

Tasha Gill, Program Manager and Affinity Lead, HRET

Phone: 312-422-2621

Email: tgill@aha.org | HEN@aha.org

Website: www.hret-hen.org